



IMPACT RESISTANT WINDOWS & DOORS

**SWING DOORS
SIDELITES
TRANSOMS**

450.0



THE ONLY THING BETTER THAN THE WAY IT LOOKS IS THE WAY IT LASTS.

CGI makes aluminum doors that look so much like wood you can't tell the difference. But as time goes on, they're going to look far, far better than wood. That's because our doors eliminate the maintenance, swelling and decay issues associated with wood doors. They retain their beauty and elegance for many years to come. What's more, should you prefer a clean, crisp, contemporary look, we can oblige you there, too. Point is, whatever the design look you have in mind, you'll find CGI aluminum windows and doors to match.



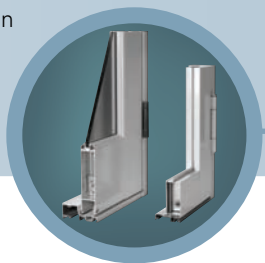
THINK OF IT AS A SECURITY SYSTEM WITHOUT THE WIRING.

With their unsurpassed impact resistance and patented 3 point locking mechanism, CGI windows and doors provide round-the-clock protection against storms, high winds and even would-be intruders. Whether you're at home or away, you're going to feel very secure indeed.



NOBODY ELSE'S ALUMINUM DOORS MEASURE UP TO CGI'S.

Our heavy gauge aluminum is much thicker, which makes for much greater impact resistance and longevity. In fact, tests have proven that CGI doors can withstand winds of 210 MPH. The competition's impact resistance doesn't begin to measure up to that. (L to R: CGI, competition)



SWING DOORS, SIDELITES & TRANSOMS



CGI's innovation and expertise have opened countless doors for us.

The same quality, precision and engineering expertise that goes into every one of our windows goes into every one of our doors.

Just like our windows, our doors feature heavy-gauge aluminum exclusively—and that sets us apart from virtually everyone else in the industry.

We've also been the leader in innovative door design, as may be seen in our patented, concealed, three point lock which is superior to other multi-point lock systems.

CGI doors also feature top-of-the-line components such as Hager solid brass or stainless steel hinges, Baldwin solid brass locks and levers, multiple layers of weather-stripping and G.E. Silicone sealants.

42"x 90" Bronze Single Entry Door with 10" decorative bottom panel, deluxe entrance handle set and aluminum decorative scroll work (scroll work not by CGI)



SWING DOORS, SIDELITES & TRANSOMS PERFORMANCE

TEST TYPE		RESULTS
Air Infiltration	Out-Swing Sill	.07 CFM @ 6.24 PSF
	In-Swing Sill	.04 CFM @ 1.57 PSF
	Saddle Threshold	.12 CFM @ 6.24 PSF
Maximum Water Resistance	Out-Swing Sill	15 PSF
	In-Swing Sill	7.5 PSF
	Saddle Threshold	Not Rated For Water
Uniform Static Load Test (Design Load) <i>On 3' x 9' Panel Size (27 Sq Ft)</i>	With Ann/Ann KeepSafe Maximum® Glass	+80 PSF / -80 PSF
	With HS/HS KeepSafe Maximum® Glass	+100 PSF / -100 PSF
Cyclic Design Load After Large Missile Impact Based On 3' x 9' Panel Size (27 Sq Ft) <i>(In accordance with Miami-Dade County Protocols PA-201 & PA-203)</i>	With ANN/ANN or HS/HS KeepSafe Maximum® Glass	+100 PSF / -100 PSF
Forced Entry Test (AAMA 1302.5)		PASSED

MIAMI-DADE COUNTY APPROVED

Accepted for use by Florida building code
(high velocity hurricane zone)

MATERIAL

Heavy Gauge Aluminum Alloy



AVAILABLE FINISHES

- White ESP, Bronze ESP, Driftwood ESP* (L to R)
- Bone White Kynar® (meets AAMA 2605)
- Class 1 Clear Anodized (special order, minimum quantities apply)
- Custom colors (special order, minimum quantities apply)

* finishes shown may not be accurate representations.

AVAILABLE GLASS TYPE

- 1/2" thick (nominal) KeepSafe Maximum® Laminated
- 1" thick insulated KeepSafe Maximum® Laminated

GLASS COLORS

Clear - Gray - Bronze - Solexia Green - Obscure

TRANSOM SIZES

Available in all door and sidelite widths (see below)
Available in the following heights: 12 7/8", 24 7/8", 36 7/8"

CUSTOM SIZES AVAILABLE

Maximum available Single Door Frame width is 44 9/16"
Maximum available Pair of Door Frame width is 86 1/2"

SWING DOOR SIZES

(In inches)

code size	door type	6' 8" high units	8' high units	9' high units
2068 / 2080 / 2090	single	26 9/16 x 80 3/4	26 9/16 x 96 3/4	26 9/16 x 108 3/4
2668 / 2680 / 2690	single	32 9/16 x 80 3/4	32 9/16 x 96 3/4	32 9/16 x 108 3/4
2868 / 2880 / 2890	single	34 9/16 x 80 3/4	34 9/16 x 96 3/4	34 9/16 x 108 3/4
3068 / 3080 / 3090	single	38 9/16 x 80 3/4	38 9/16 x 96 3/4	38 9/16 x 108 3/4
4068 / 4080 / 4090	pair	50 1/2 x 80 3/4	50 1/2 x 96 3/4	50 1/2 x 108 3/4
5068 / 5080 / 5090	pair	62 1/2 x 80 3/4	62 1/2 x 96 3/4	62 1/2 x 108 3/4
5468 / 5480 / 5490	pair	66 1/2 x 80 3/4	66 1/2 x 96 3/4	66 1/2 x 108 3/4
6068 / 6080 / 6090	pair	74 1/2 x 80 3/4	74 1/2 x 96 3/4	74 1/2 x 108 3/4

MATING SIDELITE SIZES

(In inches. Has one full jamb and one jamb adaptor, designed to mate with doors or a freestanding sidelite)

code size	note	6' 8" high units	8' high units	9' high units
1068 / 1080 / 1090	1 3/4" stiles	13 1/4 x 80 3/4	13 1/4 x 96 3/4	13 1/4 x 108 3/4
1668 / 1680 / 1690	1 3/4" stiles	19 1/4 x 80 3/4	19 1/4 x 96 3/4	19 1/4 x 108 3/4
2068 / 2080 / 2090	5 1/2" stiles	25 1/4 x 80 3/4	25 1/4 x 96 3/4	25 1/4 x 108 3/4
2668 / 2680 / 2690	5 1/2" stiles	31 1/4 x 80 3/4	31 1/4 x 96 3/4	31 1/4 x 108 3/4
2868 / 2880 / 2890	5 1/2" stiles	33 1/4 x 80 3/4	33 1/4 x 96 3/4	33 1/4 x 108 3/4
3068 / 3080 / 3090	5 1/2" stiles	37 1/4 x 80 3/4	37 1/4 x 96 3/4	37 1/4 x 108 3/4

FREESTANDING SIDELITES SIZES

(In inches. Has full jambs on both sides and can be installed independently as a single unit)

code size	note	6' 8" high units	8' high units	9' high units
1068 / 1080 / 1090	1 3/4" stiles	14 3/8 x 80 3/4	14 3/8 x 96 3/4	14 3/8 x 108 3/4
1668 / 1680 / 1690	1 3/4" stiles	20 3/8 x 80 3/4	20 3/8 x 96 3/4	20 3/8 x 108 3/4
2068 / 2080 / 2090	5 1/2" stiles	26 3/8 x 80 3/4	26 3/8 x 96 3/4	26 3/8 x 108 3/4
2668 / 2680 / 2690	5 1/2" stiles	32 3/8 x 80 3/4	32 3/8 x 96 3/4	32 3/8 x 108 3/4
2868 / 2880 / 2890	5 1/2" stiles	34 3/8 x 80 3/4	34 3/8 x 96 3/4	34 3/8 x 108 3/4
3068 / 3080 / 3090	5 1/2" stiles	38 3/8 x 80 3/4	38 3/8 x 96 3/4	38 3/8 x 108 3/4

STANDARD HARDWARE

RESIDENTIAL

- Hager 4 1/2" x 4" hinges (solid brass or stainless steel)
- Baldwin single cylinder dead bolt
- CGI patented three point lock mechanism
- Active and inactive door panels pre-bored for levers
- Flushbolts at inactive panel
- Available hardware finish:
Satin Nickel - Polished Brass - Venetian Bronze

COMMERCIAL

- Hager 4 1/2" x 4" hinges (brushed stainless steel)
- Commercial three point MS dead bolt lock
- Exterior cylinder/interior thumb turn
- Standard Push bar/Pull handle
- Flushbolts at inactive panel
- Available hardware finish: Clear (silver) Aluminum

OPTIONAL ITEMS

- In-swing configuration
- Baldwin levers
- Extruded double applied colonial muntins
(in standard or custom grids) *N/A with insulated glass*
- True horizontal muntin (4 5/8" wide)
- 1/2" thick combination aluminum/wood panel (in lieu of glass)
- Matching SIDELITES and TRANSOMS
- Saddle threshold (commercial doors, not rated for water resistance)
- 10" high decorative aluminum bottom panel
- Extruded raised profile 1" and 3 1/2" double applied muntins
N/A with insulated glass

STANDARD ACCESSORIES

- Out-swing configuration
- 2" thick (nominal) door panels
- Complete frame, threshold and weatherstripping
- Extruded snap-on glazing beads
- Extruded astragal adaptor



WE'RE
IMPACT RESISTANT WINDOWS & DOORS
STRONGER™

10100 NW 25th Street • Miami, FL 33172 USA

info@cgiwindows.com • TF: 800.442.9042

P: 305.593.6590 • F: 305.593.6592

cgiwindows.com